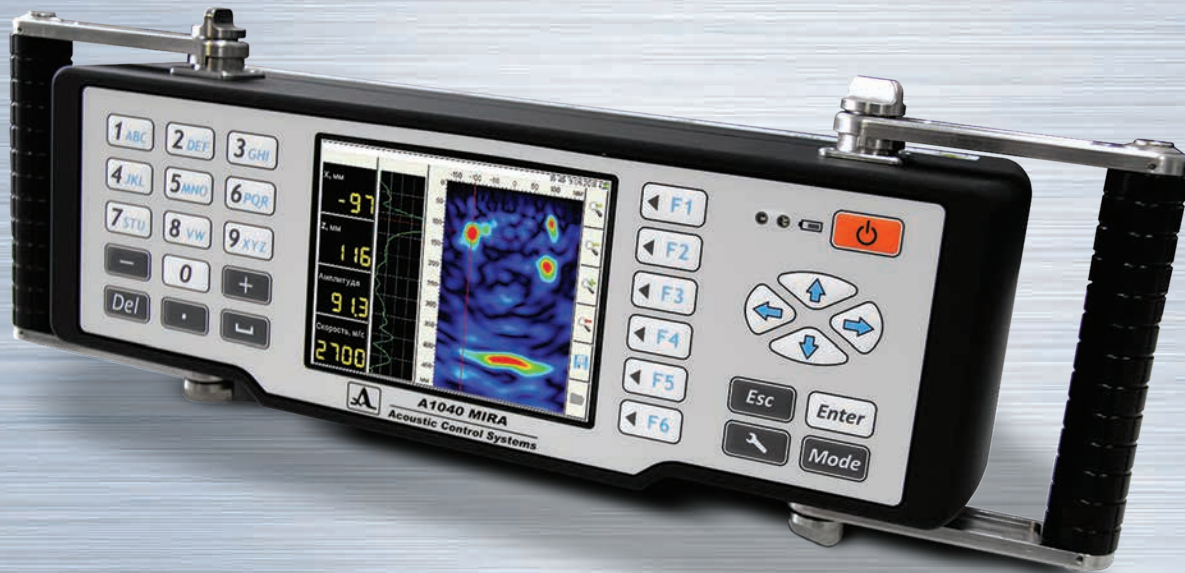




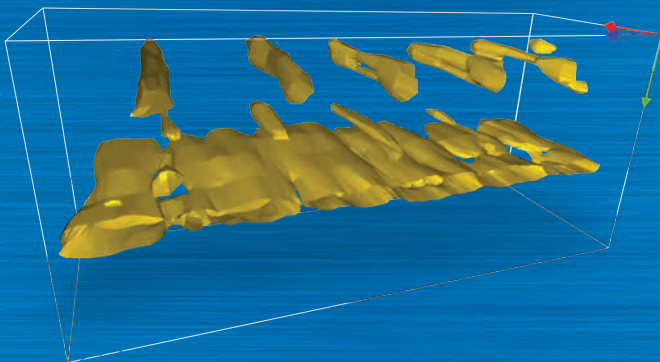
**ACOUSTIC
CONTROL
SYSTEMS**

ACS-SOLUTIONS GMBH
SCIENCE PARK 2, 66123 SAARBRÜCKEN, GERMANY
PHONE: +49 (0) 681-96592270 | FAX: +49 (0) 681-96592280
WWW.ACS-INTERNATIONAL.COM | INFO@ACS-INTERNATIONAL.COM



A1040 MIRA

PORTABLE HIGH-END ULTRASONIC TOMOGRAPH FOR REINFORCED CONCRETE TESTING



- Extraordinary penetration depth
- Outstanding near-field and far-field resolution
- New generation of wear-proof DPC transducers

Visualization by INTROVIEW®

- Integral assessment using 3D imaging
- Novel crack sizing functionality

Specification:

Number of transducers in antenna	48 (12 groups x 4 elements)
Measuring range	0.4 to 100 inches
Analogue band width	≥ 8 hours**
Analogue band width	10 to 100 KHz
Nominal transducer frequency	50 KHz
Safety rated	IP54
Physical size of instrument	14.6 x 5.9 x 5.7 inches



Special Features:

- One-piece design with integrated anti-glare TFT color display
- 3D data collection and processing in MAP-mode
- German TÜV certified methodology for reinforcement and duct channels detection



3D Software INTROVIEW®:

- 3D-View modes:
 - ISO-Surface
 - Texture Mapping
 - Maximum Intensity Projection
- 2D-View modes:
 - Panorama B-, C-, D-Scan
 - Cutting plane / gated volume
- Compatibility with other ACS Instruments (A1220 MONOLITH, A1040 MIRA)



Delivery Kit:

- A1040 MIRA electronic unit
- 220V/15V Power supply unit
- Cable USB A - Micro B
- Checking sample
- Transport case
- 3D Software INTROVIEW®

* Material & application dependent ** Operation mode dependent